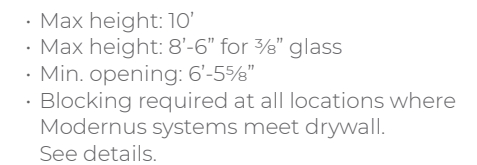


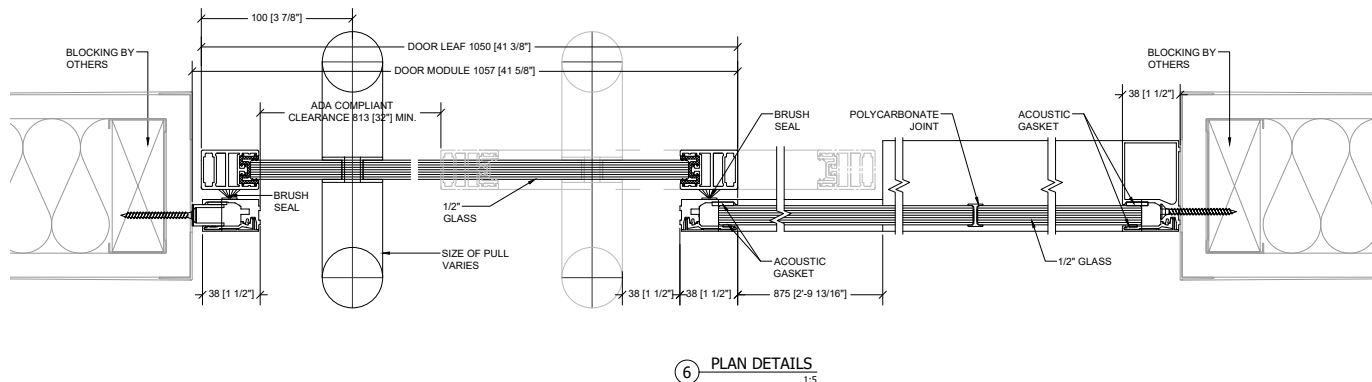
Single-Glazed (1/2" or 3/8")
Framed-Sliding Door



- Fixed glass: ½" or ⅜"
- Door glass: ½" or ¼" monolithic, always tempered

- Locking pull, non-locking pull

All dimensions in mm [inches] unless otherwise stated.
Do not scale from this drawing. This drawing is
property of modernus copyright protected.

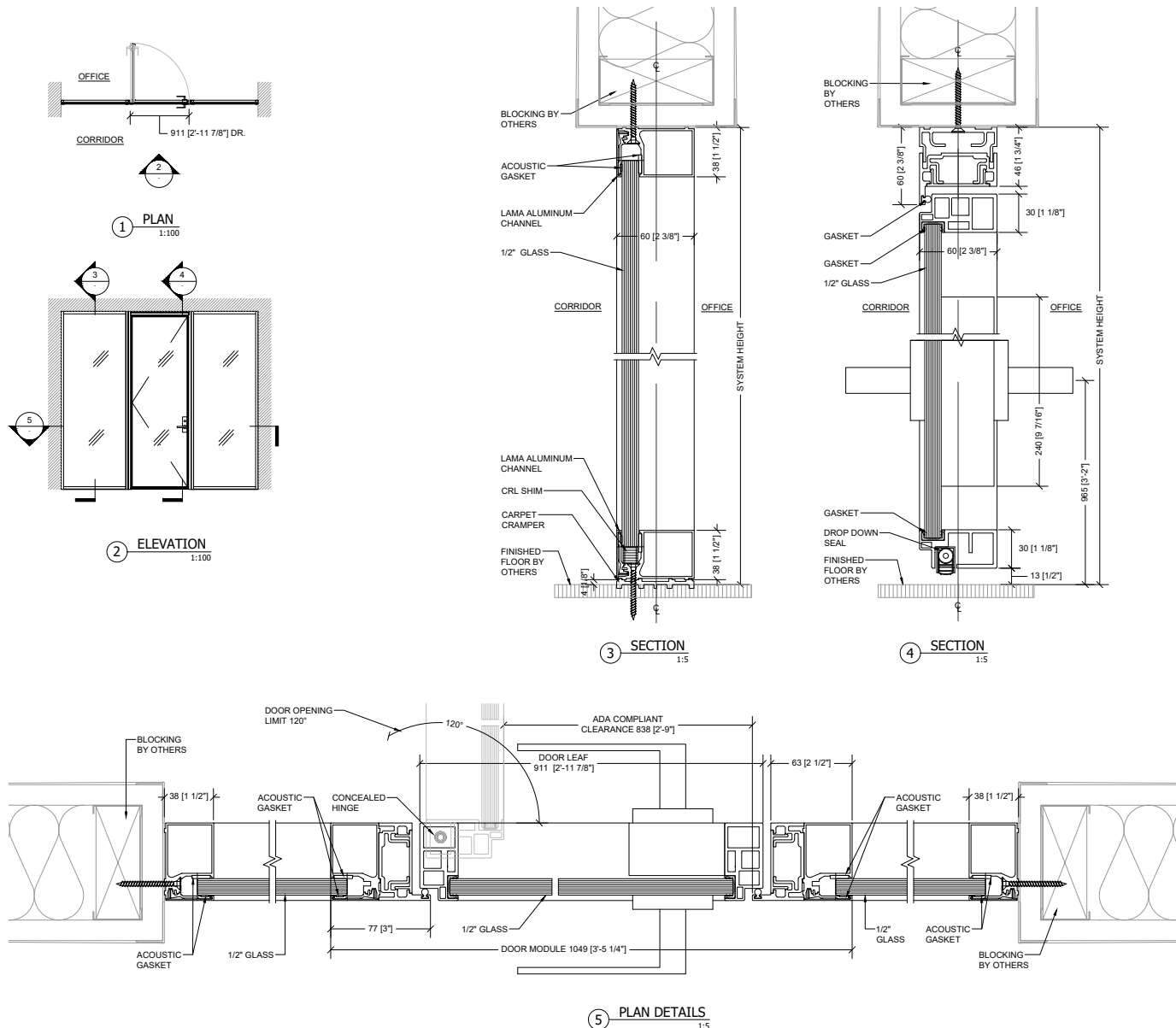


MODERNUS

Technical Details

LAMA

Single-Glazed ($\frac{1}{2}$ " or $\frac{3}{8}$ ")
Framed-Pivot Door



- Max height: 10'
- Max height: 8'-6" for $\frac{3}{8}$ " glass
- Min. opening only door: 3'-6"
- Min. opening door+side light: 4'-0 $\frac{1}{4}$ "
- Door Opening Limit: 120°
- Blocking required at all locations where Modernus systems meet drywall. See details.

GLASS

- Fixed glass: $\frac{1}{2}$ " or $\frac{3}{8}$ "
- Door glass: $\frac{1}{2}$ ", always tempered

HARDWARE OPTIONS

- Lever and mortise block, locking pull, non-locking pull
- Magnetic catch
- Overhead exposed closer, floor closer

SECURITY HARDWARE OPTIONS

- Maglock, electric strike, electric bolt, electric mortise lock

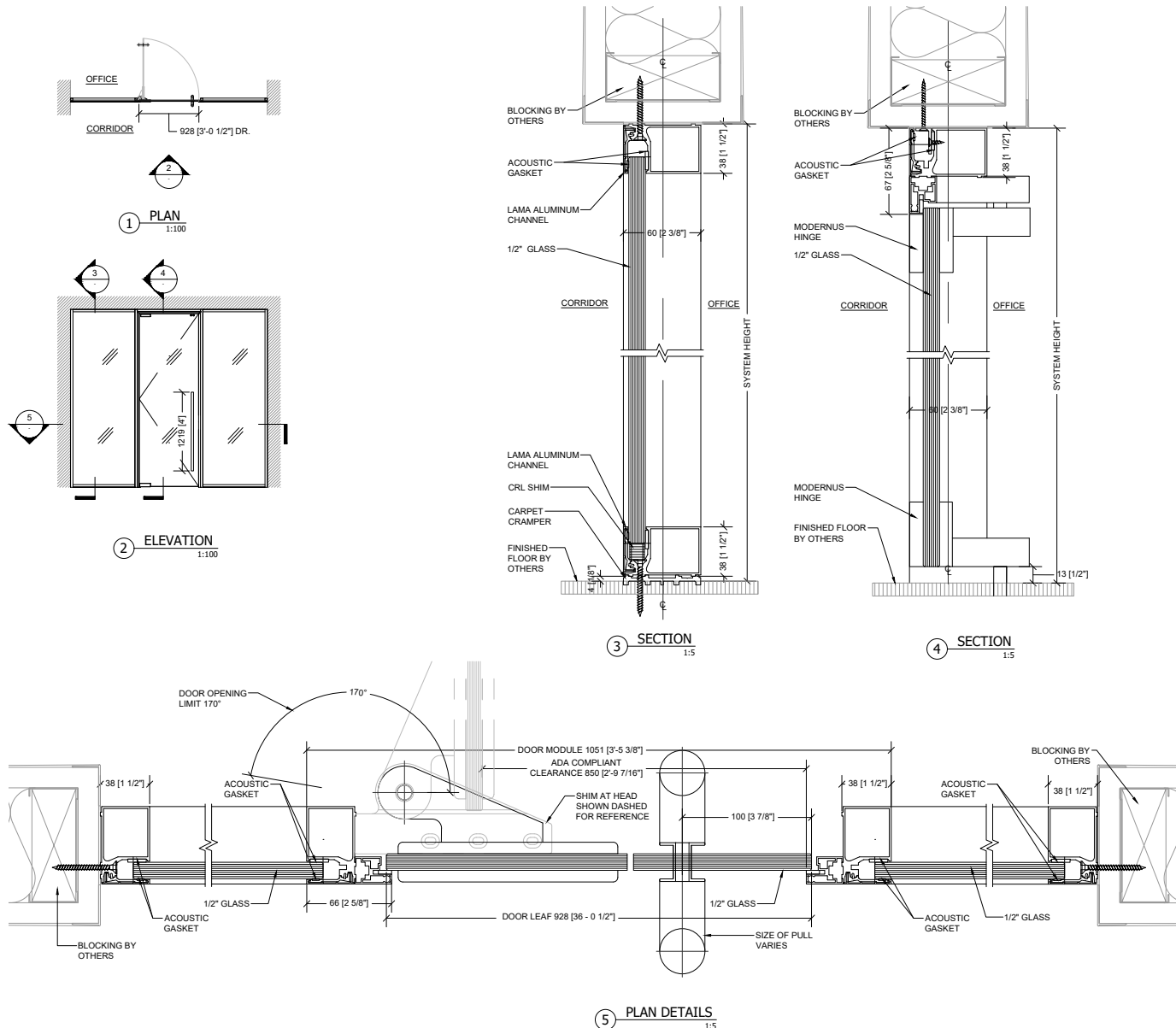
All dimensions in mm [inches] unless otherwise stated.
Do not scale from this drawing. This drawing is property of modernus copyright protected.

MODERNUS

Technical Details

LAMA

Single-Glazed ($\frac{1}{2}$ " or $\frac{3}{8}$ ")
Frameless-Pivot Door



- Max height: 10'
- Max height: 8'-6" for $\frac{3}{8}$ " glass
- Min. opening only door: 3'-5 $\frac{1}{2}$ "
- Min. opening door+side light: 4'-0 $\frac{1}{4}$ "
- Door Opening Limit: 175°
- Blocking required at all locations where Modernus systems meet drywall. See details.

GLASS

- Fixed glass: $\frac{1}{2}$ " or $\frac{3}{8}$ "
- Door glass: $\frac{1}{2}$ ", always tempered

HARDWARE OPTIONS

- Lever and mortise lock, locking pull, non-locking pull
- Magnetic catch
- Floor closer

SECURITY HARDWARE OPTIONS

- Maglock

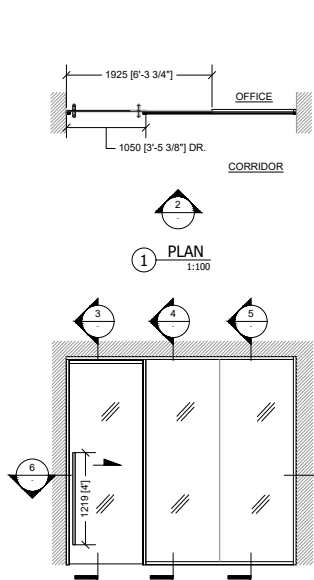
All dimensions in mm [inches] unless otherwise stated.
Do not scale from this drawing. This drawing is property of modernus copyright protected.

MODERNUS

Technical Details

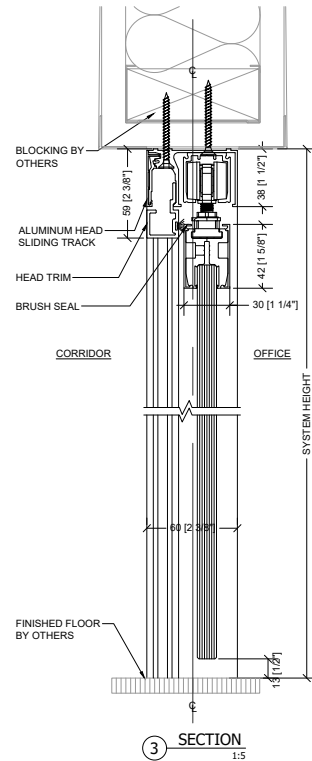
LAMA

Single-Glazed ($\frac{1}{2}$ " or $\frac{3}{8}$ ")
Frameless-Sliding Door

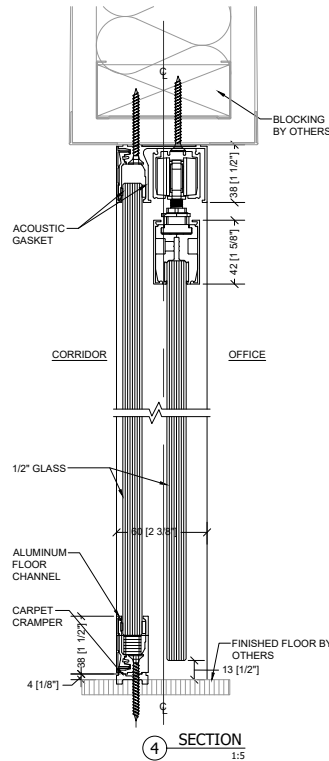


1 PLAN
1:100

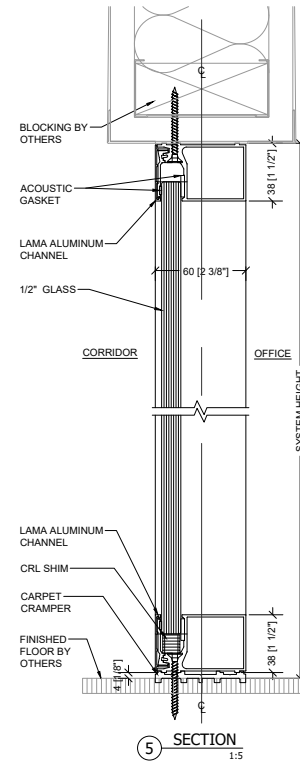
2 ELEVATION
1:100



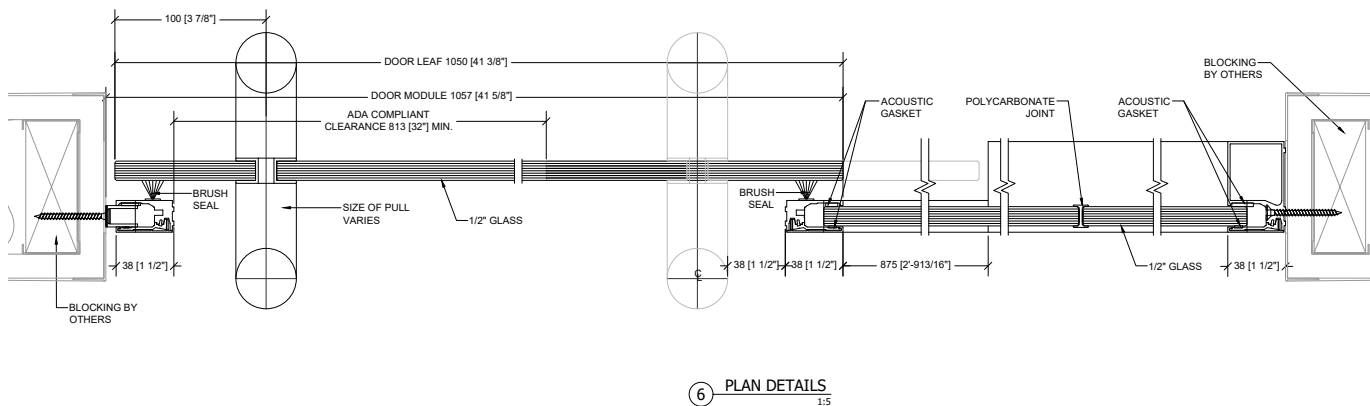
3 SECTION
1:5



4 SECTION
1:5



5 SECTION
1:5



6 PLAN DETAILS
1:5

- Max height: 10'
- Max height: 8'-6" for $\frac{3}{8}$ " glass
- Min. opening: 6'-5 $\frac{5}{8}$ "
- Blocking required at all locations where Modernus systems meet drywall. See details.

GLASS

- Fixed glass: $\frac{1}{2}$ " or $\frac{3}{8}$ "
- Door glass: $\frac{1}{2}$ ", always tempered

HARDWARE OPTIONS

- Locking pull, non-locking pull

All dimensions in mm [inches] unless otherwise stated.
Do not scale from this drawing. This drawing is property of modernus copyright protected.

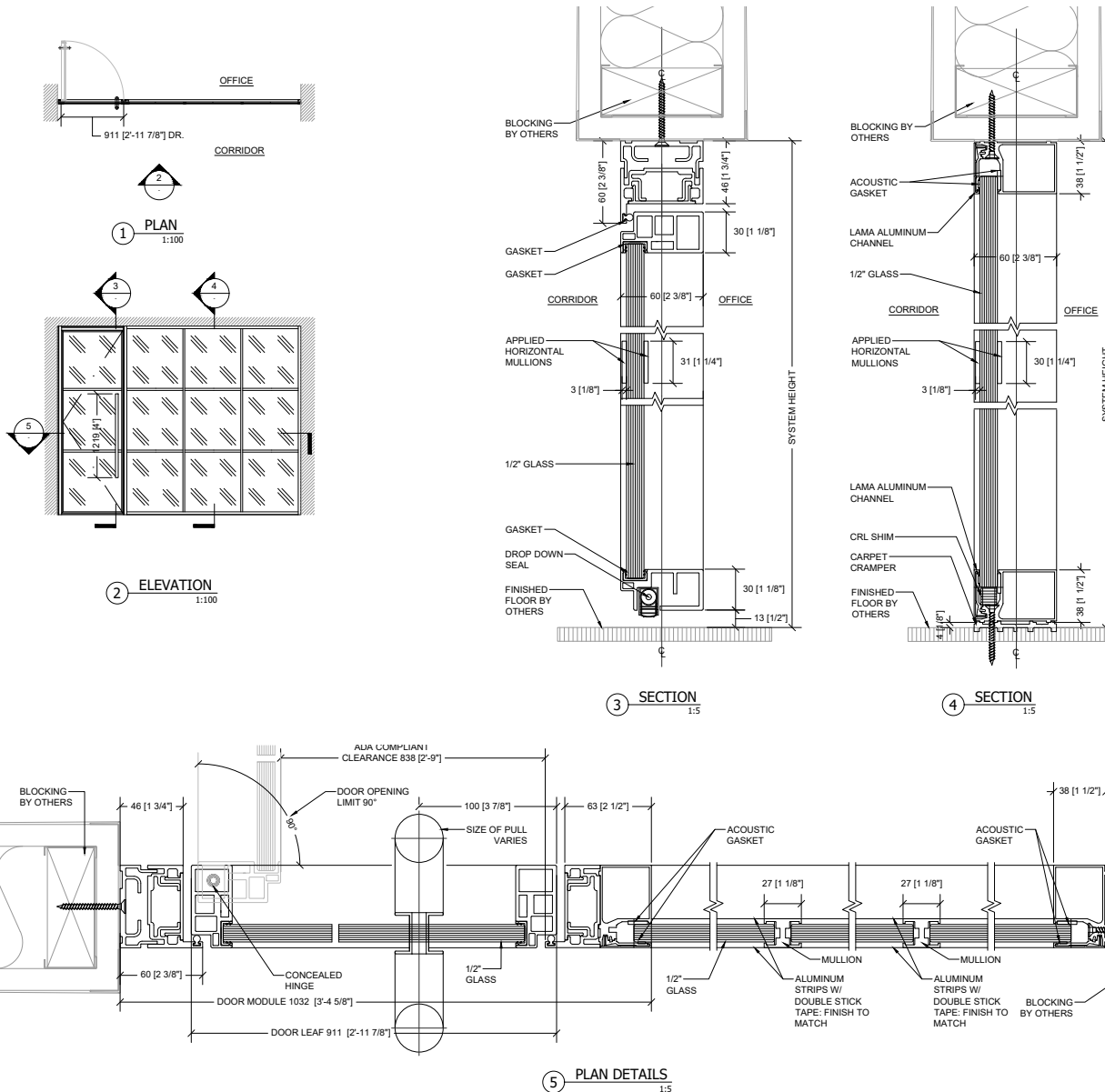
MODERNUS

Technical Details

LAMA

Single-Glazed ($\frac{1}{2}$ " or $\frac{3}{8}$ ")

Framed-Pivot Door with Mullions



- Max height: 10'
- Max height: 8'-6" for $\frac{3}{8}$ " glass
- Min. Opening only door: 3'-4"
- Min. Opening door + side light: 3'-11 $\frac{1}{4}$ "
- Door Opening Limit: 120°
- Blocking required at all locations where Modernus systems meet drywall. See details.

GLASS

- Fixed glass: $\frac{1}{2}$ " or $\frac{3}{8}$ "
- Door glass: $\frac{1}{2}$ ", always tempered

HARDWARE OPTIONS

- Lever and mortise block, locking pull, non-locking pull
- Magnetic catch
- Overhead exposed closer, floor closer
- Maglock, electric strike, electric bolt, electric mortise lock

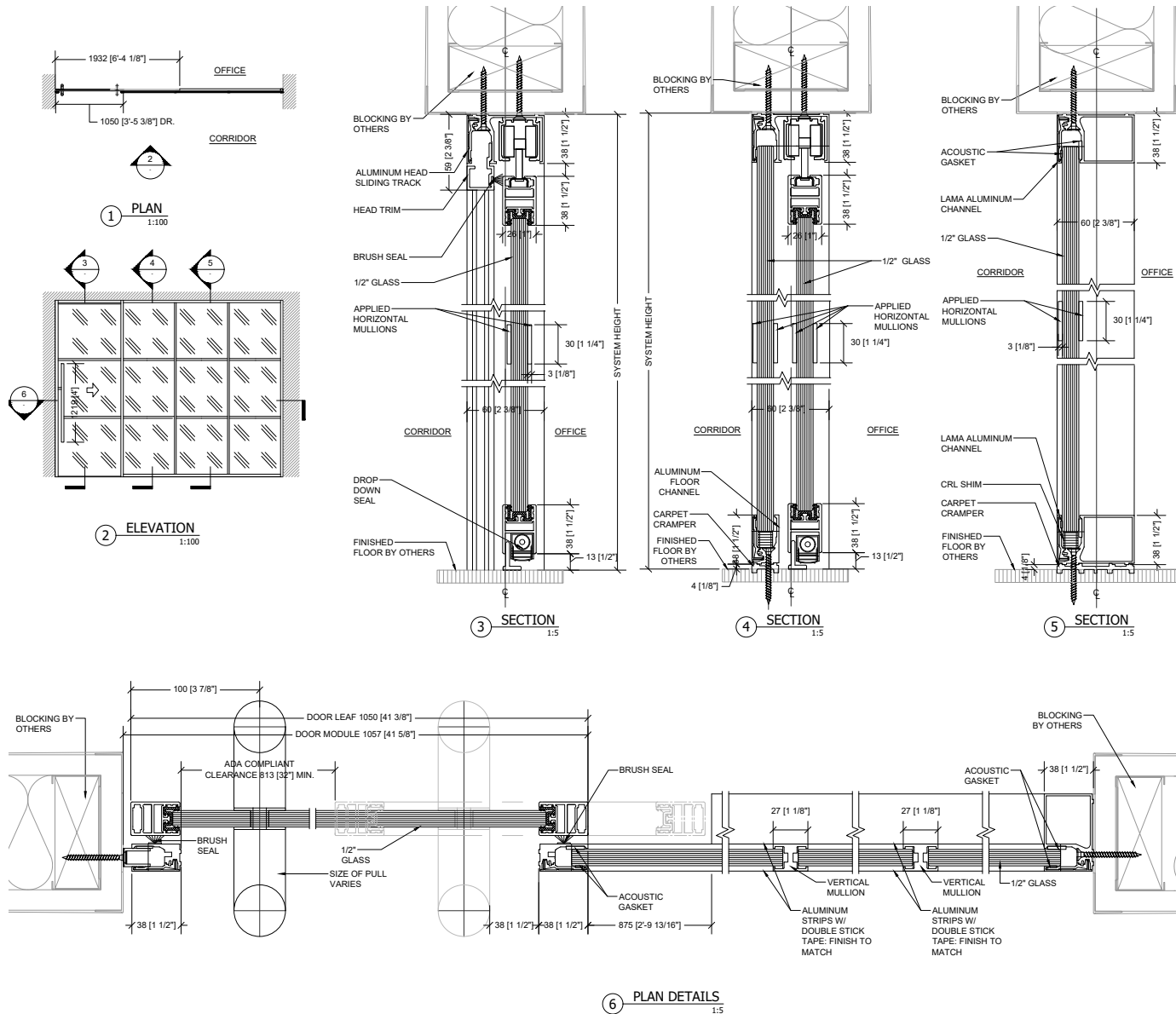
All dimensions in mm [inches] unless otherwise stated. Do not scale from this drawing. This drawing is property of modernus copyright protected.

MODERNUS

Technical Details

LAMA

Single-Glazed (1/2" or 3/8")
Framed-Sliding Door with Mullions



- Max height: 10'
- Max height: 8'-6" for 3/8" glass
- Min. opening: 6'-5 5/8"
- Blocking required at all locations where Modernus systems meet drywall. See details.

GLASS

- Fixed glass: 1/2" or 3/8"
- Door glass: 1/2" or 1/4" monolithic, always tempered

HARDWARE OPTIONS

- Locking pull, non-locking pull

All dimensions in mm [inches] unless otherwise stated.
Do not scale from this drawing. This drawing is property of modernus copyright protected.

MODERNUS

Technical Details

LAMA

Single-Glazed ($\frac{5}{8}$ ")Framed-Pivot Door with 10" ADA Bottom Rail

- Max height: 10'
- Min. opening only door: 3'-4"
- Min. opening door + side light: 3'-11 $\frac{1}{4}$ "
- Door Opening Limit: 120°
- Blocking required at all locations where Modernus systems meet drywall. See details.

GLASS

- Fixed glass: $\frac{5}{8}$ " laminated glass (0.06" interlayer)
- Door glass: $\frac{5}{8}$ " laminated glass (0.06" interlayer) or $\frac{1}{2}$ " glass, always tempered

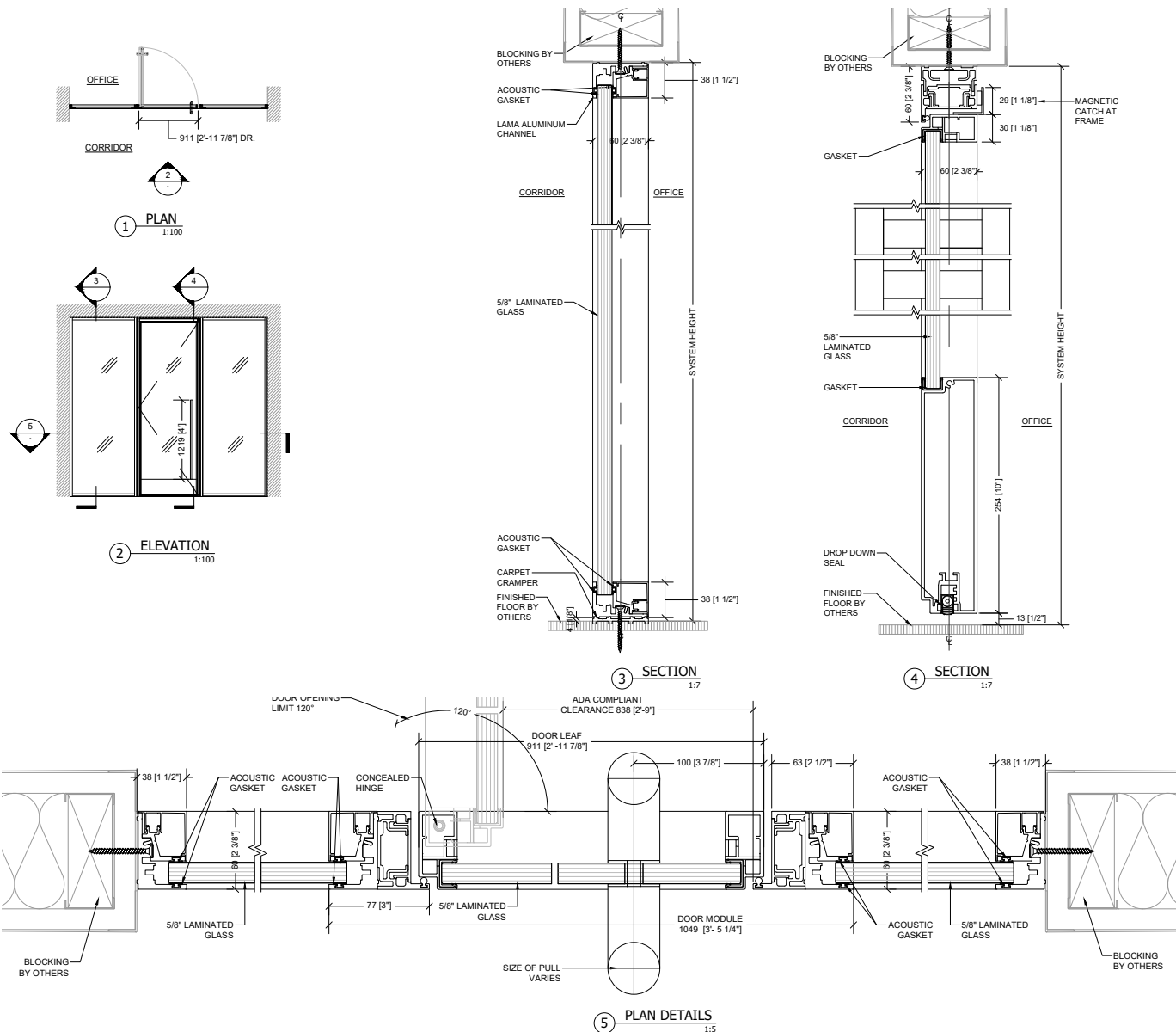
HARDWARE OPTIONS

- Lever and mortise lock, non-locking pull
- Magnetic catch
- Overhead exposed closer, floor closer

SECURITY HARDWARE OPTIONS

- Maglock, electric bolt

All dimensions in mm [inches] unless otherwise stated. Do not scale from this drawing. This drawing is property of modernus copyright protected.



MODERNUS

Technical Details

LAMA

Single-Glazed (1/2" or 3/8")
Framed-Pivot Door ADA Compliant

- Max height: 10'
- Max height: 8'-6" for 3/8" glass
- Min. opening only door: 3'-6"
- Min. opening door+side light: 4'-0 1/4"
- Door Opening Limit: 120°
- Blocking required at all locations where Modernus systems meet drywall. See details.

GLASS

- Fixed glass: 1/2" or 3/8"
- Door glass: 1/2", always tempered

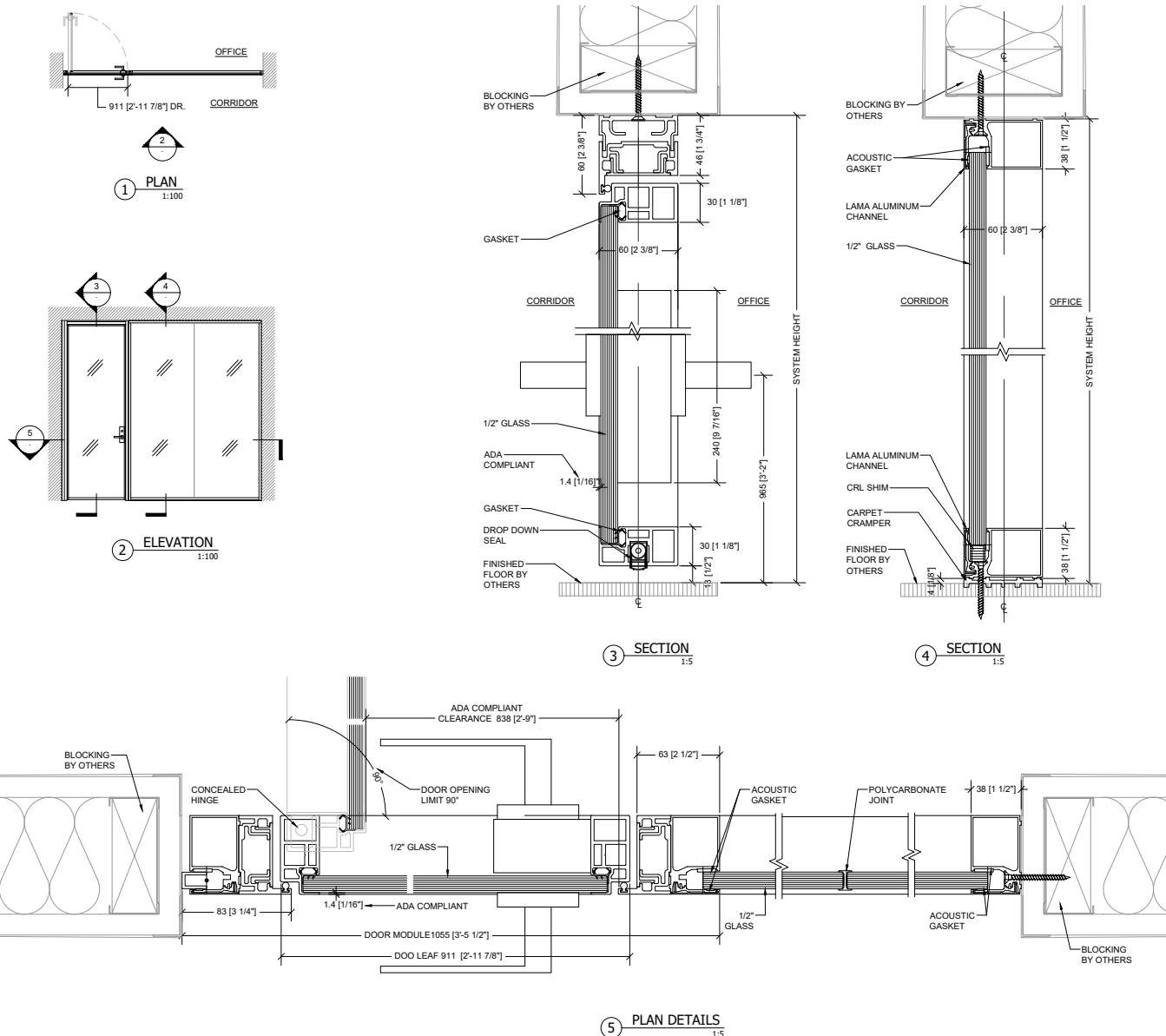
HARDWARE OPTIONS

- Lever and mortise block, locking pull, non-locking pull
- Magnetic catch
- Overhead exposed closer
- Overhead concealed closer

SECURITY HARDWARE OPTIONS

- Maglock, electric mortise lock

All dimensions in mm [inches] unless otherwise stated.
Do not scale from this drawing. This drawing is property of modernus copyright protected.

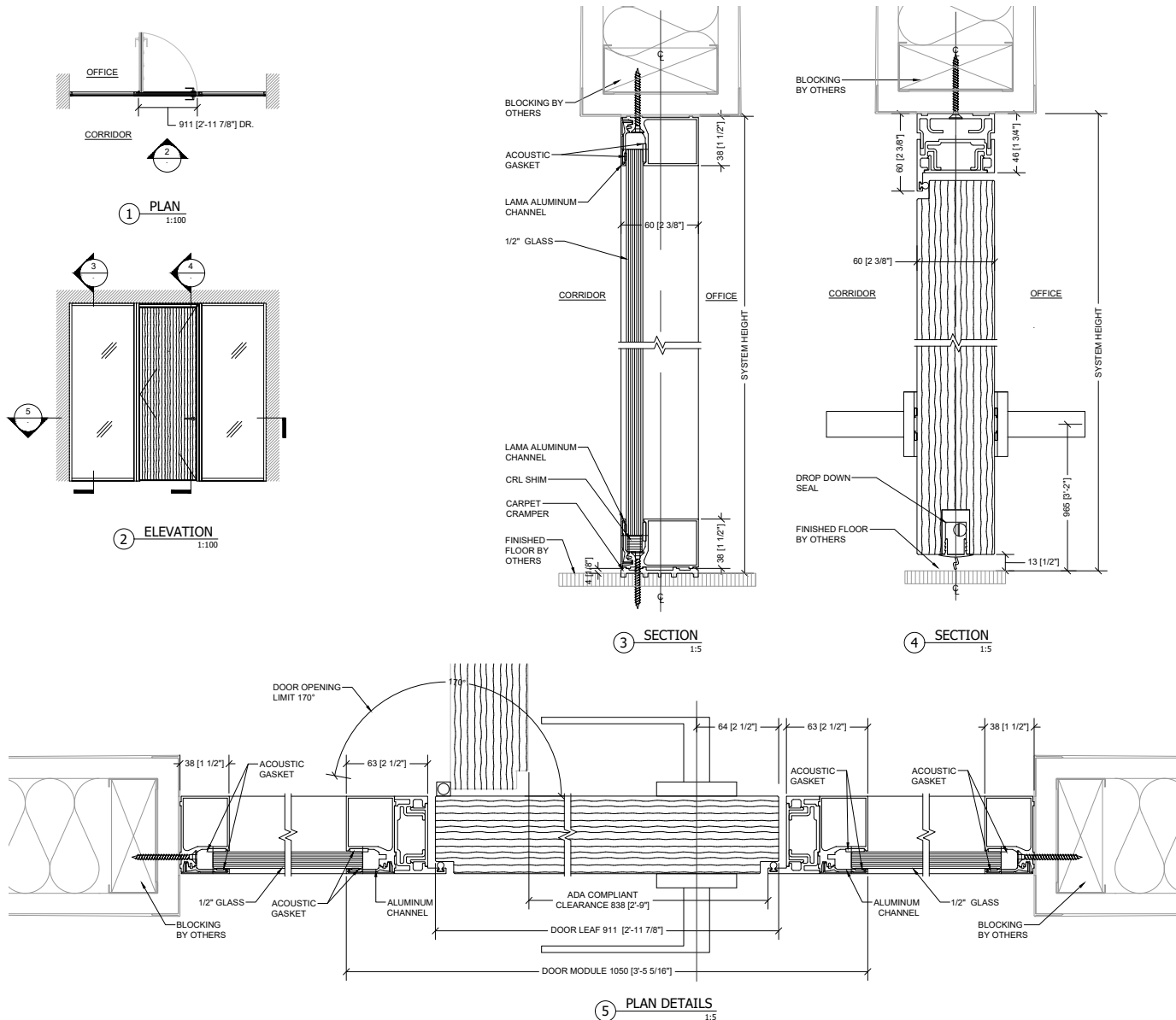


MODERNUS

Technical Details

LAMA

Single-Glazed ($\frac{1}{2}$ " or $\frac{3}{8}$ ")
Wood-Pivot Door



- Max height: 10'
- Max height: 8'-6" for $\frac{3}{8}$ " glass
- Min. opening only door: 3'-6"
- Min. opening door + side light: 4'-0 1/4"
- Door Opening Limit: 170°
- Blocking required at all locations where Modernus systems meet drywall. See details.

GLASS

- Fixed glass: $\frac{1}{2}$ " or $\frac{3}{8}$ "

HARDWARE OPTIONS

- Lever and mortise block, locking pull, non-locking pull
- Magnetic catch
- Overhead exposed closer

SECURITY HARDWARE OPTIONS

- Electric strike

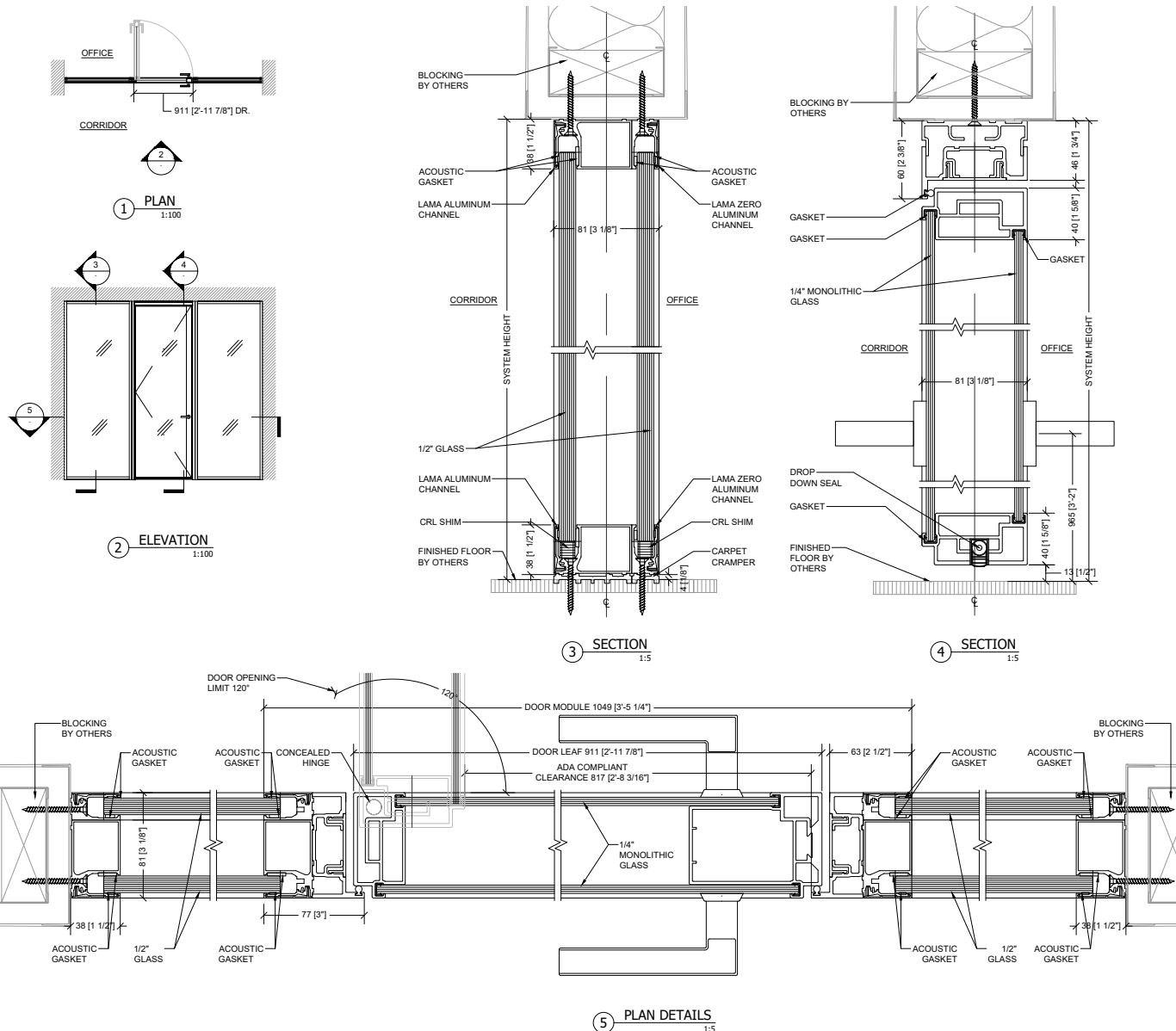
All dimensions in mm [inches] unless otherwise stated.
Do not scale from this drawing. This drawing is property of modernus copyright protected.

MODERNUS

Technical Details

LAMA

Dual-Glazed ($\frac{1}{2}$ " or $\frac{3}{8}$ ")
Framed-Pivot Door



- Max height: 10'
- Max height: 8'-6" for $\frac{3}{8}$ " glass
- Min. opening only door: 3'-6"
- Min. opening door + side light: 4'-0 $\frac{1}{4}$ "
- Door Opening Limit: 120°
- Blocking required at all locations where Modernus systems meet drywall. See details.

GLASS

- Fixed glass: $\frac{1}{2}$ " or $\frac{3}{8}$ "
- Door glass: $\frac{1}{4}$ " monolithic glass, always tempered

HARDWARE OPTIONS

- Lever and mortise lock, locking pull, non-locking pull
- Magnetic catch
- Overhead concealed closer

SECURITY HARDWARE OPTIONS

- Maglock, electric mortise lock, electric strike

All dimensions in mm [inches] unless otherwise stated.
Do not scale from this drawing. This drawing is property of modernus copyright protected.

MODERNUS

Technical Details

LAMA

Dual-Glazed ($\frac{1}{2}$ " or $\frac{3}{8}$ ")
Wood-Pivot Door

- Max height: 10'
- Max height: 8'-6" for $\frac{3}{8}$ " glass
- Min. opening only door: 3'-6"
- Min opening door + side light: 4'-0 $\frac{1}{4}$ "
- Door Opening Limit: 120°
- Blocking required at all locations where Modernus systems meet drywall. See details.

GLASS

- Fixed glass: $\frac{1}{2}$ " or $\frac{3}{8}$ "

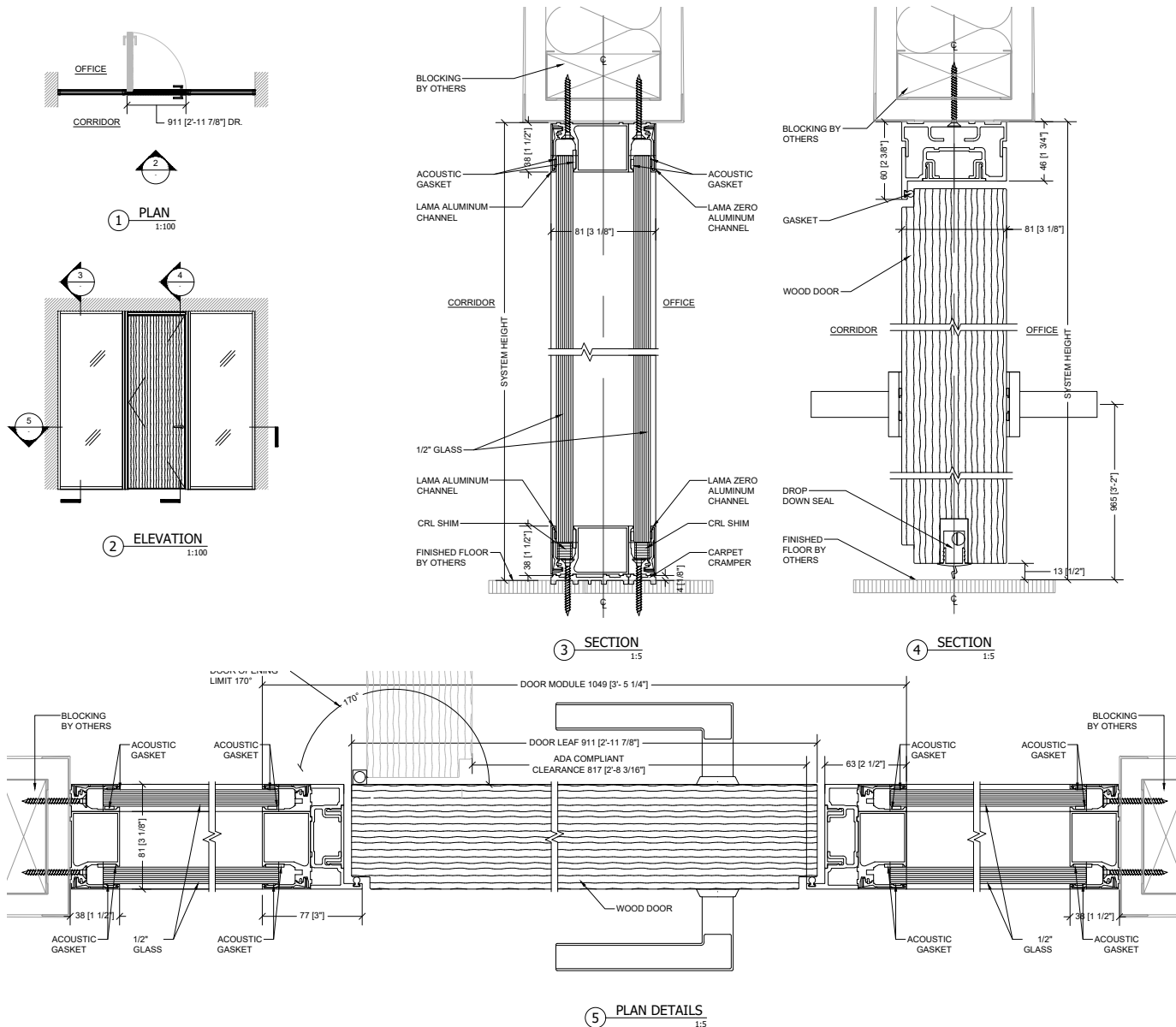
HARDWARE OPTIONS

- Lever and mortise lock, locking pull, non-locking pull
- Magnetic catch

SECURITY HARDWARE OPTIONS

- Electric strike

All dimensions in mm [inches] unless otherwise stated.
Do not scale from this drawing. This drawing is property of modernus copyright protected.



MODERNUS

Technical Details

LAMA

Dual-Glazed ($\frac{1}{2}$ " or $\frac{3}{8}$ ")
Framed-Pivot Door
with 10" ADA Bottom Rail

- Max height: 10'
- Max height: 8'-6" for $\frac{3}{8}$ " glass
- Min. opening only door: 3'-6"
- Min opening door + side light: 4'-0 1/4"
- Door Opening Limit: 120°
- Blocking required at all locations where Modernus systems meet drywall. See details.

GLASS

- Fixed glass: $\frac{1}{2}$ " or $\frac{3}{8}$ "
- Door glass: $\frac{1}{4}$ " monolithic glass, always tempered

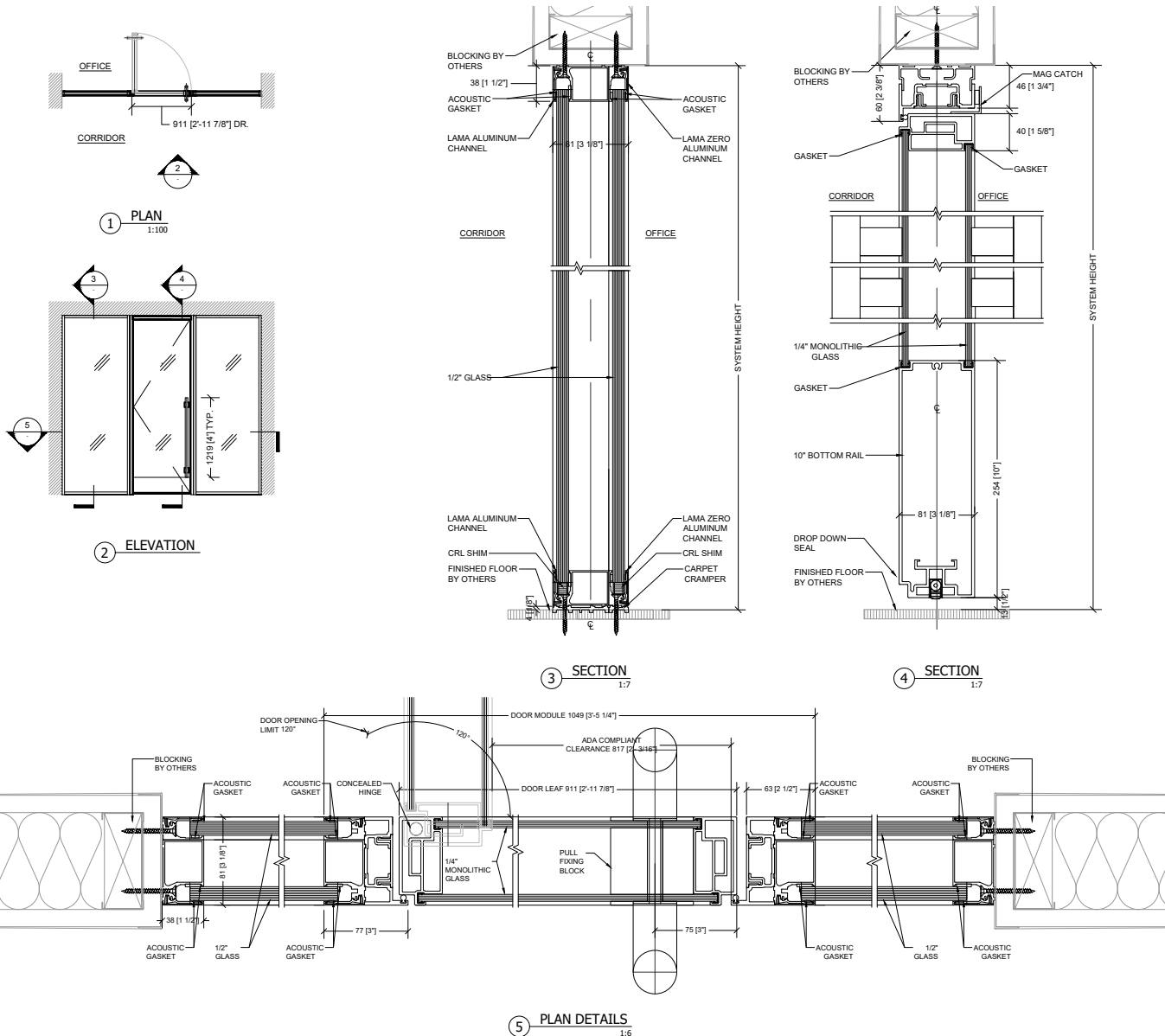
HARDWARE OPTIONS

- Lever and mortise lock, non-locking pull
- Magnetic catch
- Overhead concealed closer

SECURITY HARDWARE OPTIONS

- Electric strike

All dimensions in mm [inches] unless otherwise stated.
Do not scale from this drawing. This drawing is property of modernus copyright protected.



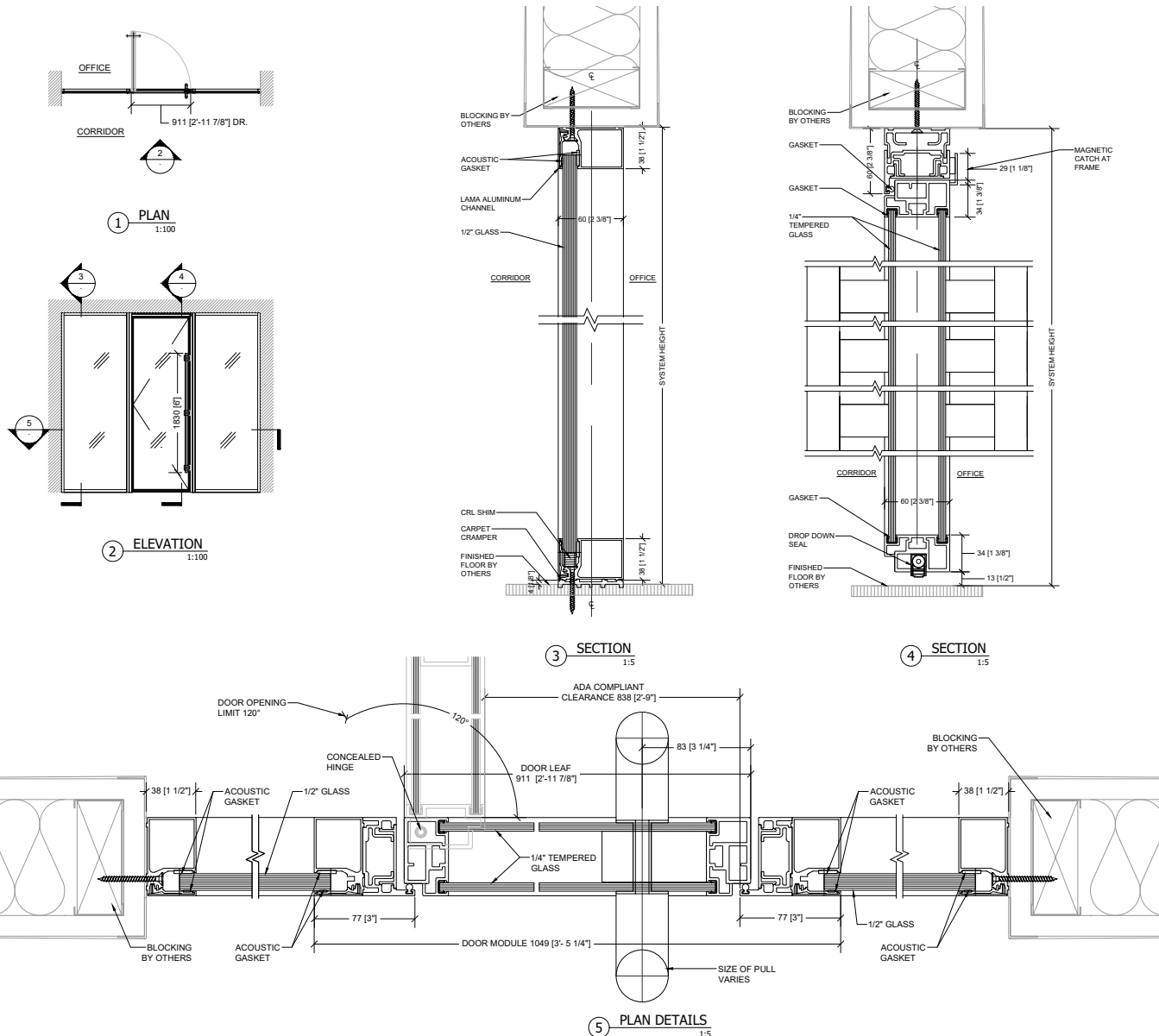
MODERNUS

Technical Details

LAMA

Single-Glazed ($\frac{1}{2}$ " or $\frac{3}{8}$ ")

Dual-Glazed Framed-Pivot Door



- Max height: 10'
- Max height: 8'-6" for $\frac{3}{8}$ " glass
- Min. opening only door: 3'-4"
- Min opening door + side light: 3'-11 1/4"
- Door Opening Limit: 120°
- Blocking required at all locations where Modernus systems meet drywall.
- See details.

GLASS

- Fixed glass: $\frac{1}{2}$ " or $\frac{3}{8}$ "
- Door glass: $\frac{1}{4}$ " monolithic, always tempered

HARDWARE OPTIONS

- Lever and mortise lock, locking pull, non-locking pull
- Magnetic catch
- Overhead concealed closer

SECURITY HARDWARE OPTIONS

- Electric mortise lock

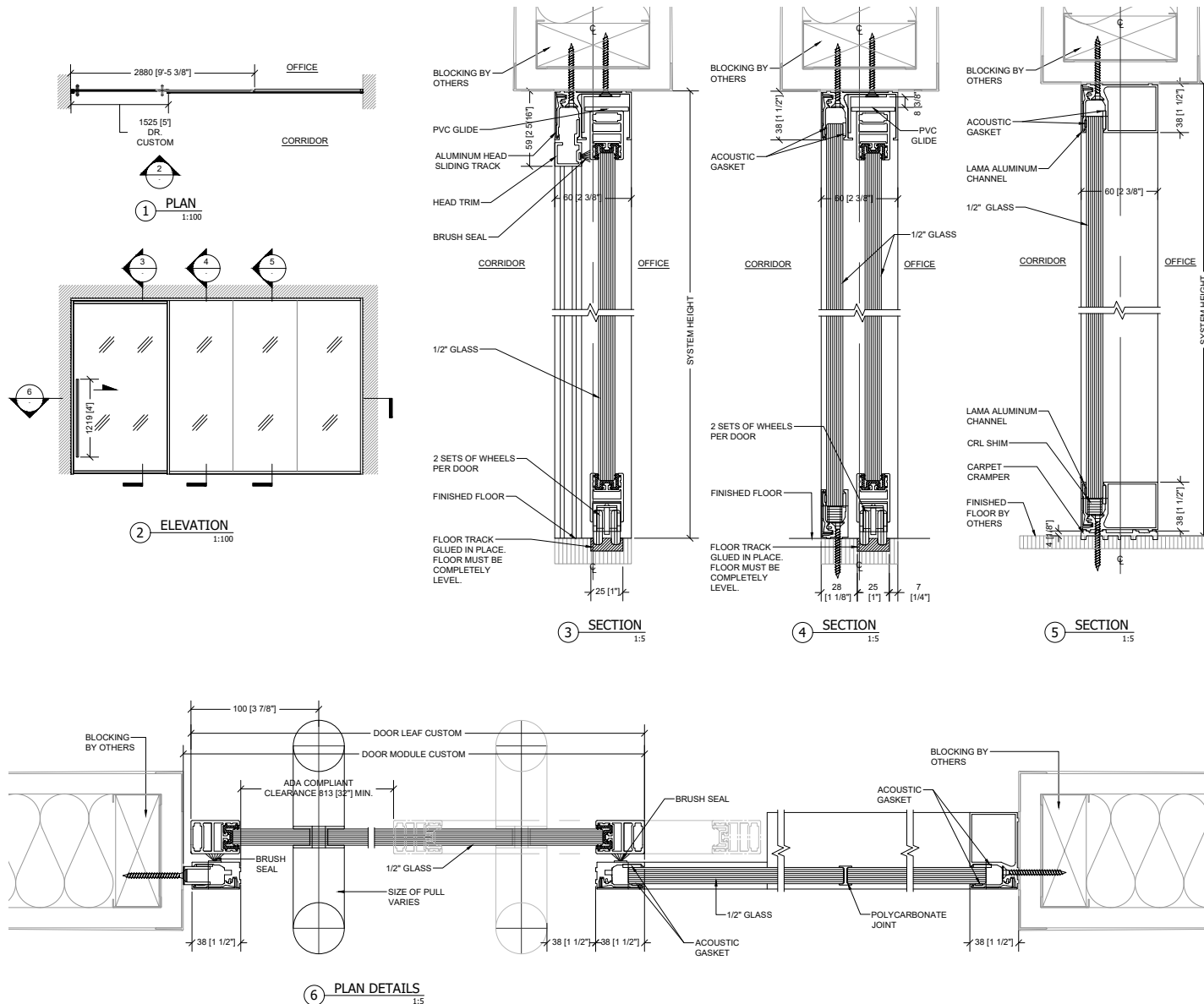
All dimensions in mm [inches] unless otherwise stated.
Do not scale from this drawing. This drawing is property of modernus copyright protected.

MODERNUS

Technical Details

LAMA

Single-Glazed (1/2" or 3/8")
Oversized-Sliding Door



- Max height: 10'
- Max height: 8'-6" for 3/8" glass
- Opening must be plumb and level within +/- 1/8" across entire opening
- Coordination needed to embed the floor guide in the floor
- Blocking required at all locations where Modernus systems meet drywall. See details.

GLASS

- Fixed glass: 1/2" or 3/8"
- Door glass: 1/2", always tempered

HARDWARE OPTIONS

- Locking pull, non-locking pull

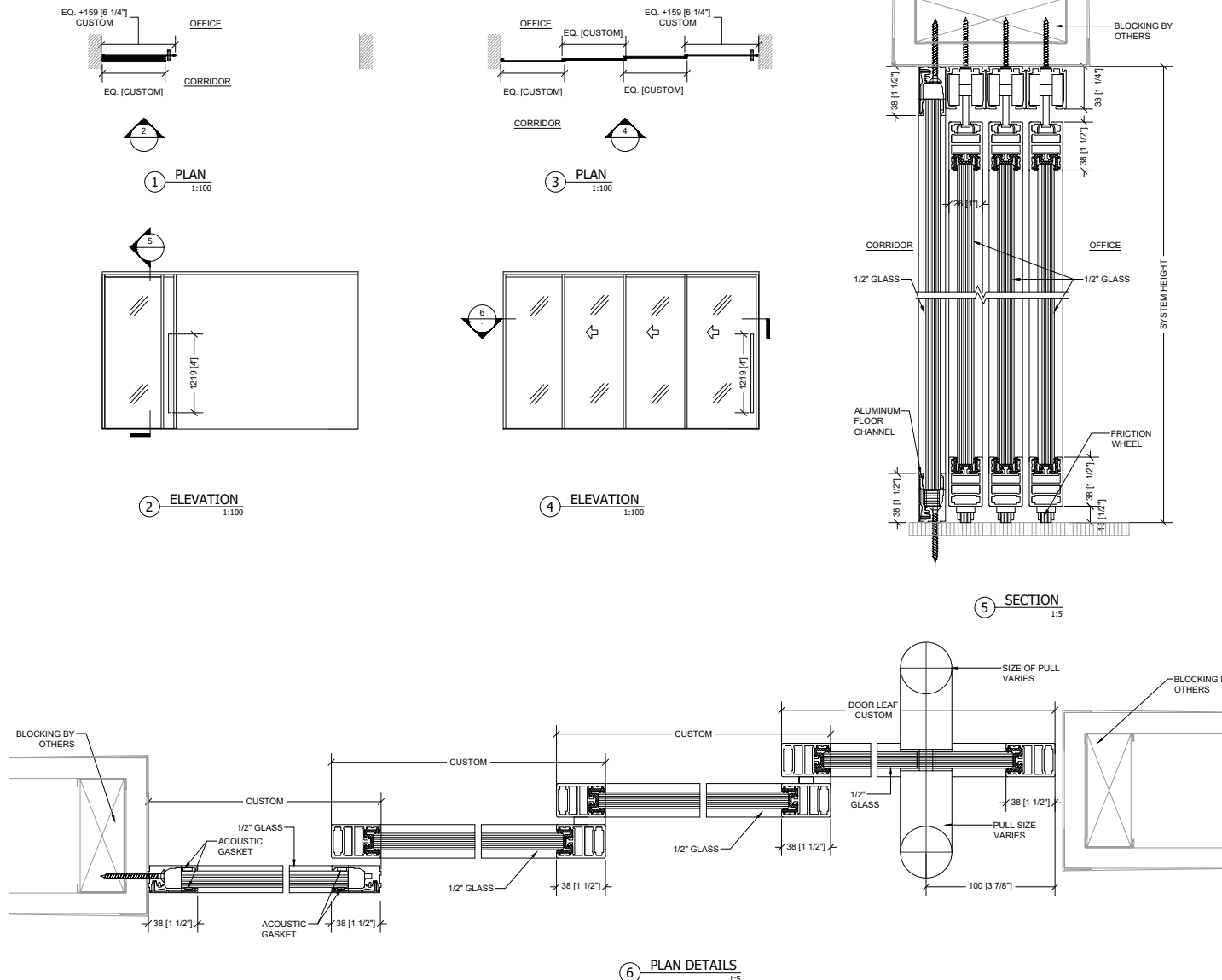
All dimensions in mm [inches] unless otherwise stated.
Do not scale from this drawing. This drawing is property of modernus copyright protected.

MODERNUS

Technical Details

LAMA

Single-Glazed (1/2" or 3/8")
Telescopic Door



- Max height: 10'
- Max height: 8'-6" for 3/8" glass
- Blocking required at all locations where Modernus systems meet drywall. See details.
- Opening must be plumb and level within +/- 1/8" across entire opening
- Maximum door weight is 220 lb per sliding door. Header must be able to support all doors when in open position.
- Finished floor needs to be a hard surface. See details.
- Telescopic system must be centered on header

GLASS

- Fixed glass: 1/2" or 3/8"
- Door glass: 1/2", or 1/4" monolithic, always tempered

HARDWARE OPTIONS

- Locking pull, non-locking pull

All dimensions in mm [inches] unless otherwise stated.
Do not scale from this drawing. This drawing is property of modernus copyright protected.

MODERNUS

Technical Details

LAMA

Single-Glazed (5/8")
Framed-Pivot Door



- Max height: 10'
- Min. opening only door: 3'-4"
- Min. opening door+side light: 3'-11 1/4"
- Door Opening Limit: 120°
- Blocking required at all locations where Modernus systems meet drywall. See details.

GLASS

- Fixed glass: 5/8" laminated glass (0.06" interlayer)
- Door glass: 5/8" laminated glass (0.06" interlayer) or 1/2" glass, always tempered

HARDWARE OPTIONS

- Lever and mortise lock, locking pull, non-locking pull
- Magnetic catch
- Overhead exposed closer

SECURITY HARDWARE OPTIONS

- Maglock

All dimensions in mm [inches] unless otherwise stated.
Do not scale from this drawing. This drawing is property of modernus copyright protected.

